

the **art**
of **health**
and **happiness**



through facade design

The Metals in Construction magazine 2018 Design Challenge is a competition to generate ideas for a facade system that can play a major role in enhancing employee health and well-being.

In line with the competition brief, this entry aims to improve health and well-being in the workplace by providing a façade design that offers visual access to the outdoor environment through the creation of an in-between space, further enriched with a palette of natural materials. The façade has been specifically designed to be adaptive and responsive to human needs, providing natural ventilation and thermal control in order to enhance employee contentment, engagement, and productivity.

500 Kent Avenue in the heart of Brooklyn's developing tech hub.



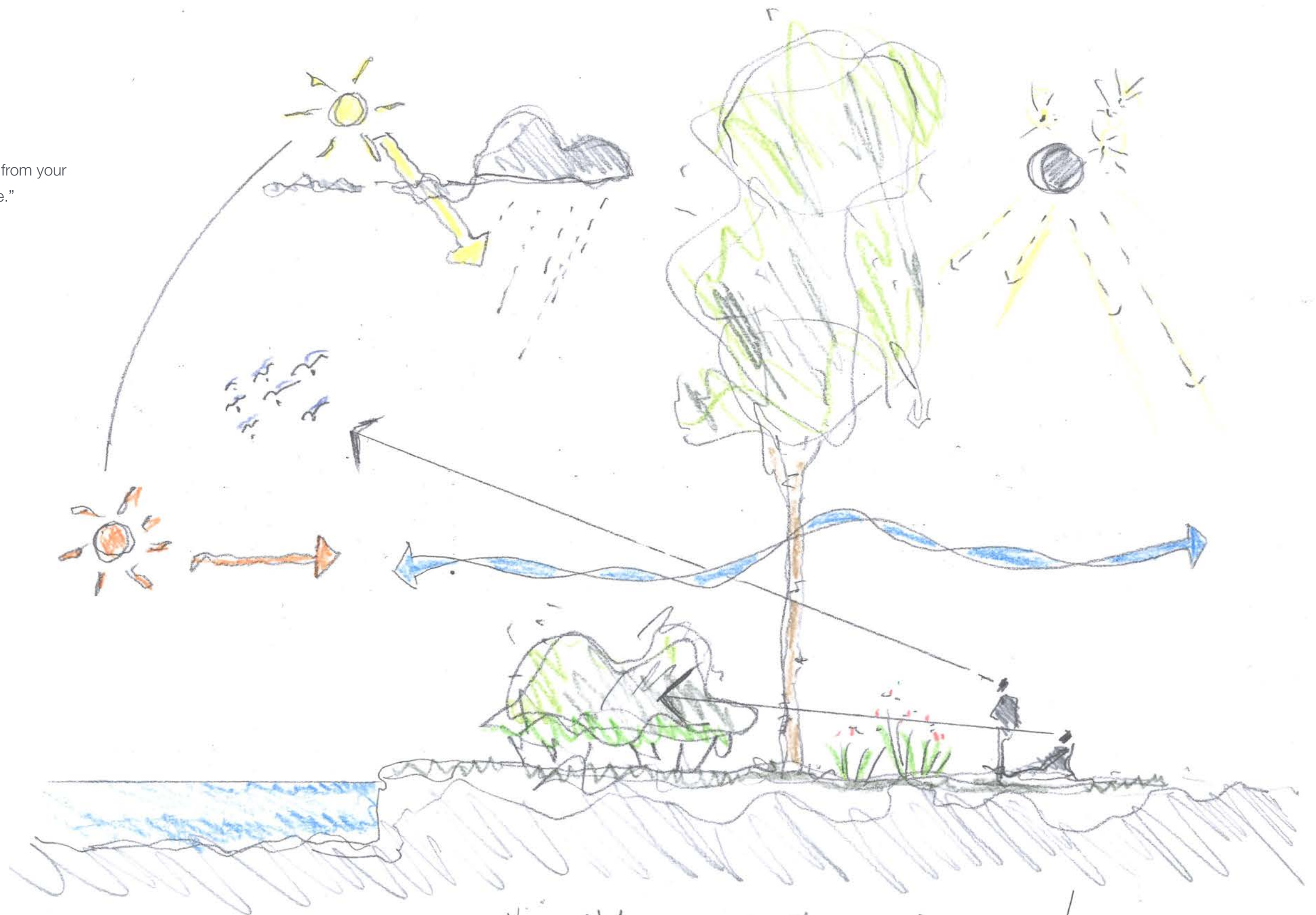
Is it true?

“The more time you spend away from your desk the better your work will be.”

The human condition

What we all need.....

- Fresh air
- Sunlight
- Living things
- Connect with nature
- The passage of time
- Day + night
- Light + dark
- The moon + stars
- Stillness



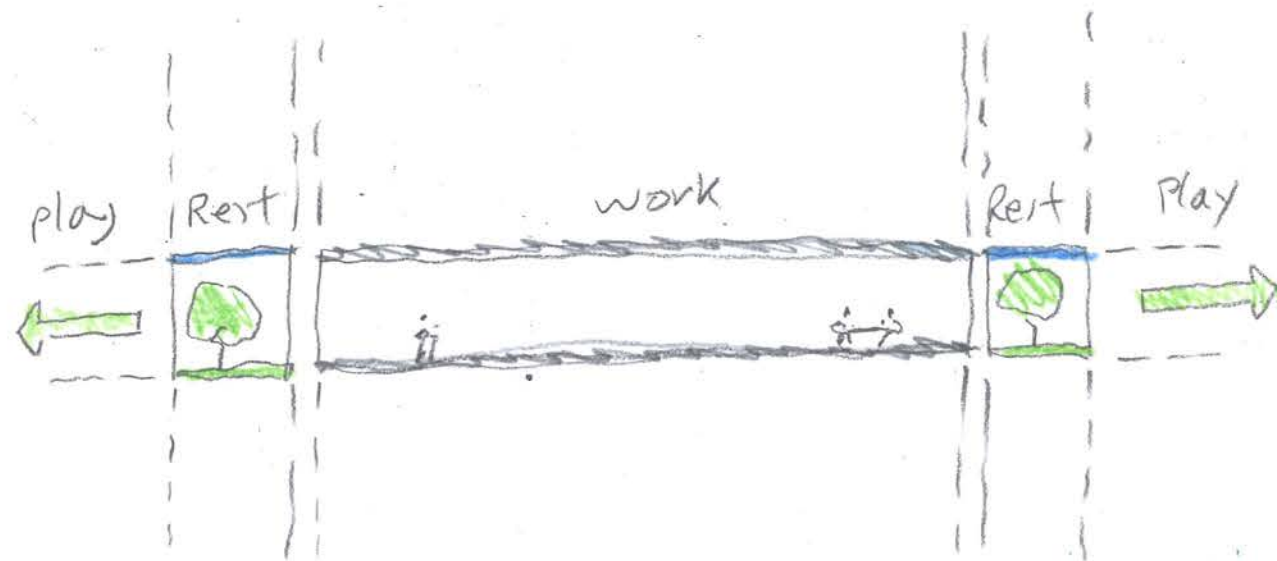
How do we do this?

Health + Happiness!

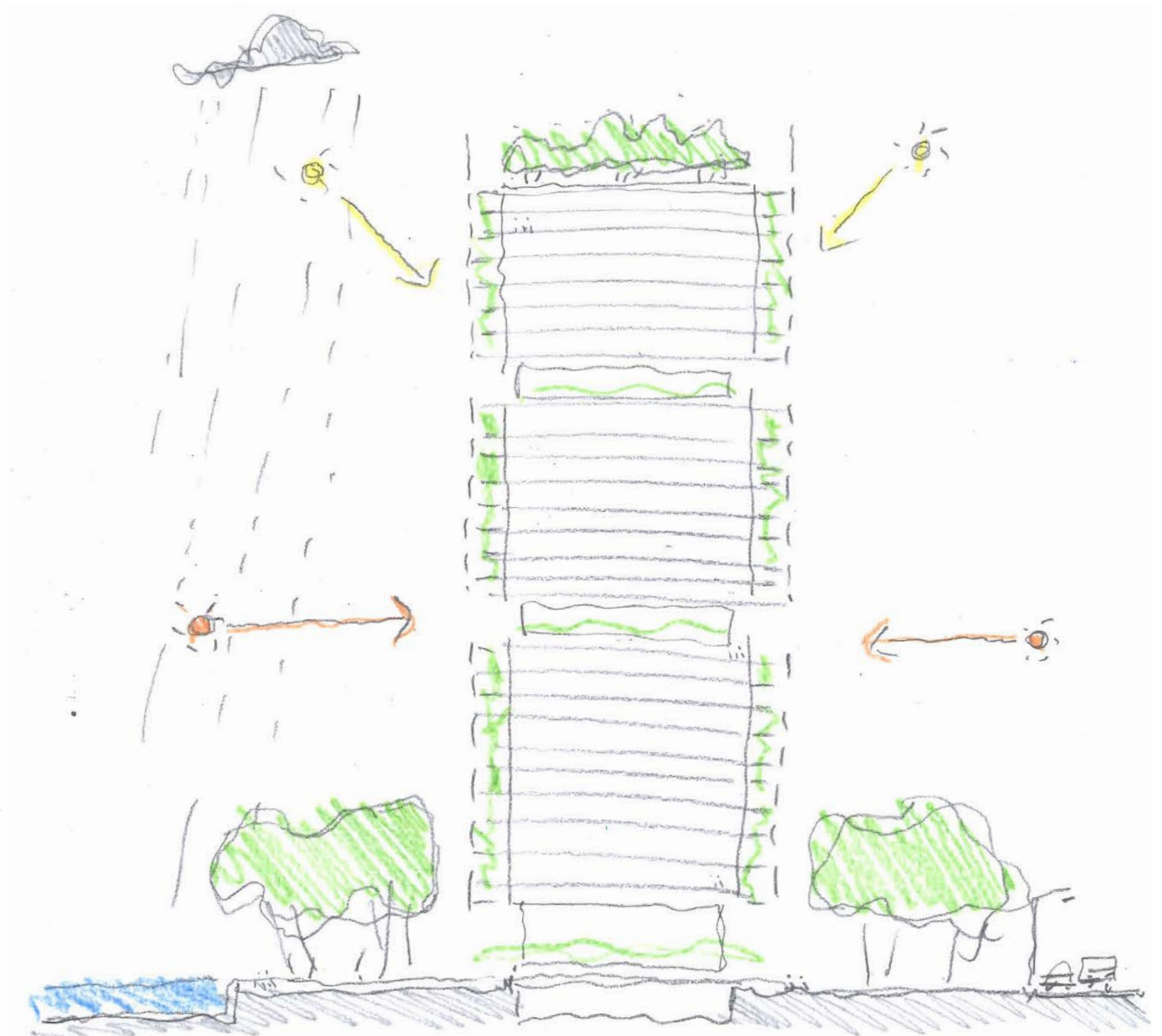
Answer.....

“ We make connections.”

- Go horizontal
- Connect with the outside world on a physical level
- Stack it vertically
- Everyone benefits



Horizontal



Vertical

The 'double-double' façade

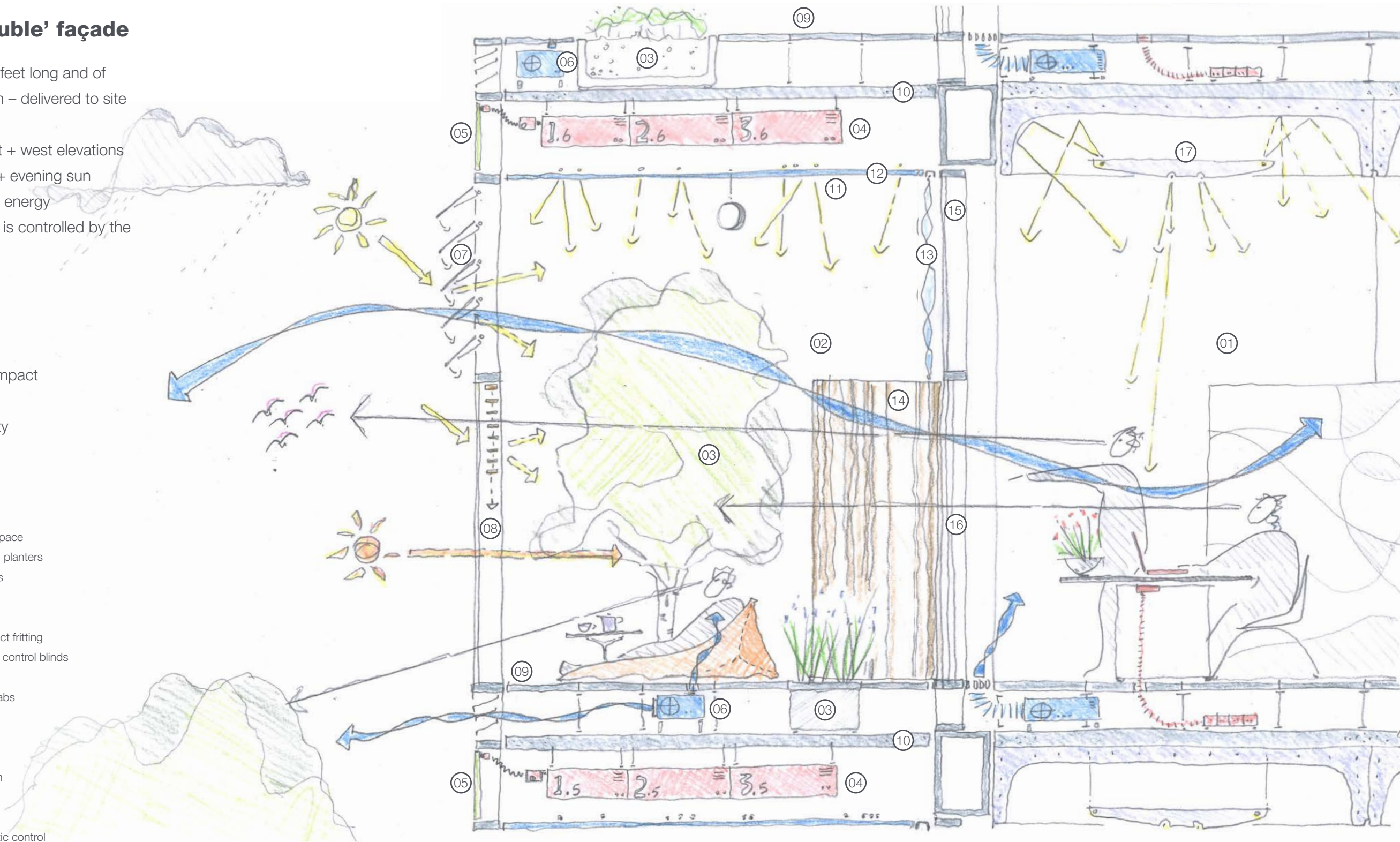
- It's 9 feet deep + 18 feet long and of modular construction – delivered to site fully fitted out
- It runs along the east + west elevations
- It captures morning + evening sun
- It collects and stores energy
- Its local environment is controlled by the people inside

Result.....

- Contentment
- Low environmental impact
- Reduced stress
- Increased productivity

Key

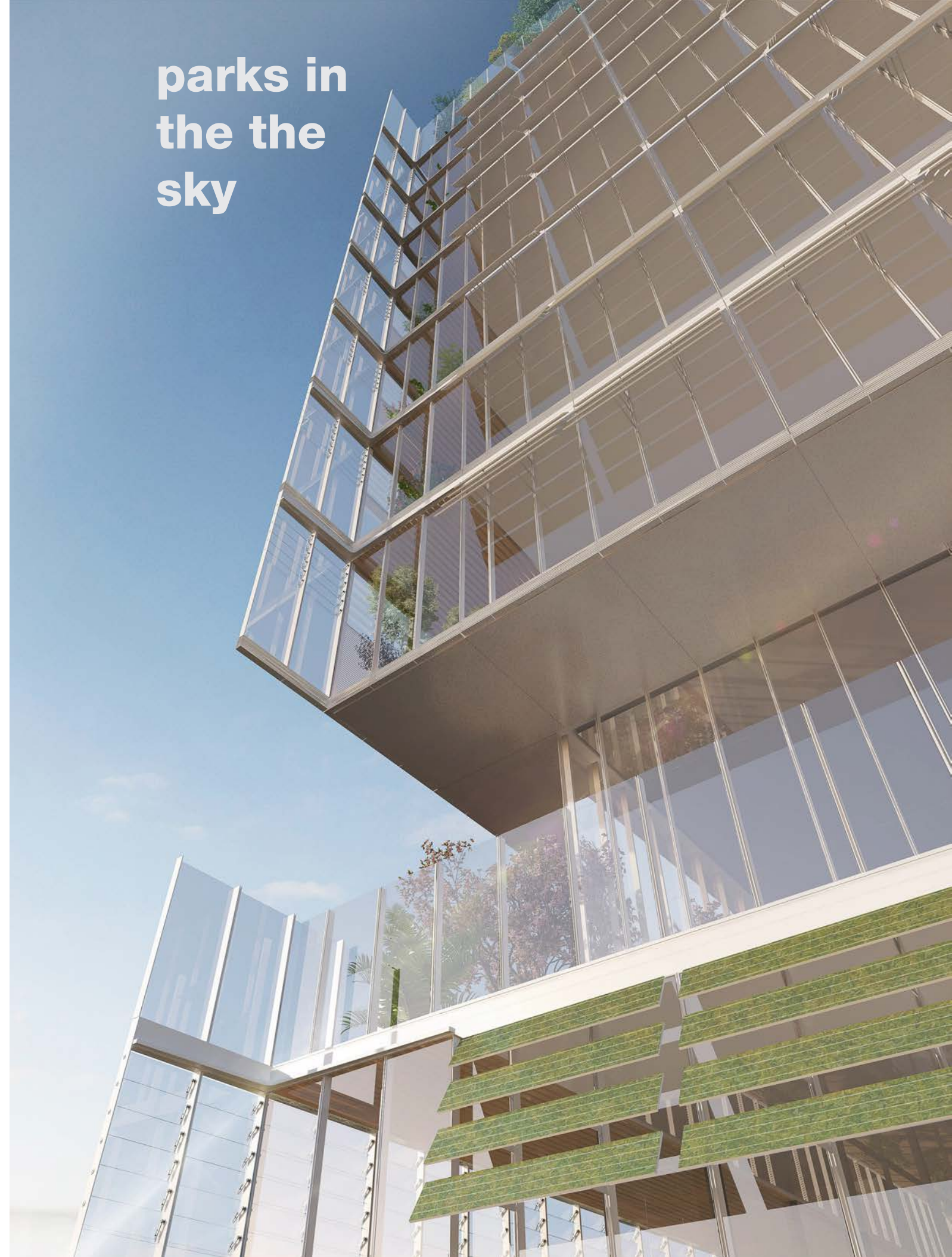
1. Work/office space
2. The double-double façade space
3. Trees and plants in recessed planters
4. Battery storage from PV cells
5. PV cells
6. Local air control units
7. Glass louvres with cloud effect fritting
8. Glass skin with internal solar control blinds
9. Timber raised access floor
10. Glass reinforced concrete slabs
11. Star lighting
12. Sky ceiling
13. Fabric curtain
14. Timber slatted mobile screen
15. Double glazed fixed panels
16. Double glazed sliding doors
17. Workspace lighting + acoustic control



**building
in the
park**

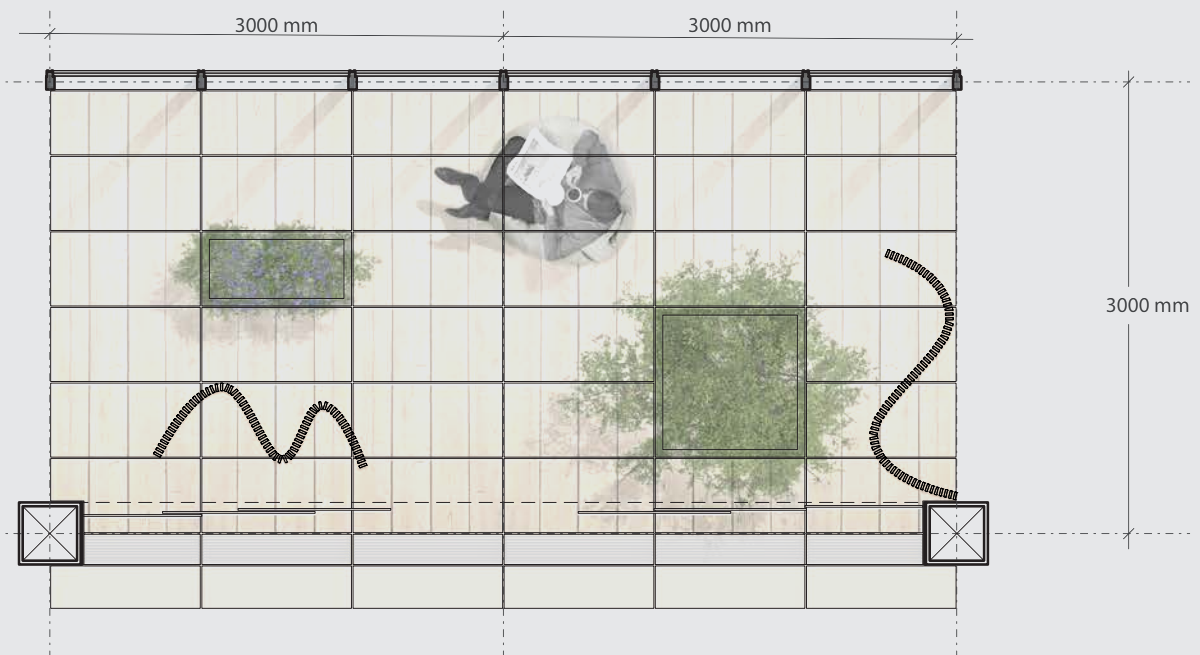


**parks in
the the
sky**





elevation module




plan module



work,
rest +
play
connec-
tion



An architectural rendering of a modern office courtyard. The space is enclosed by a 'double-double facade module' made of horizontal wooden slats. On the left, a woman with long blonde hair, wearing a denim jacket and jeans, stands with her arms crossed, looking out. In the center, a large green tree stands on a tiled floor. To the right, a man sits on a large green beanbag chair, working on a laptop. The courtyard is decorated with colorful triangular flags and a string of lights. The background shows a city skyline through the glass walls of the building.

the
double-double
facade
module